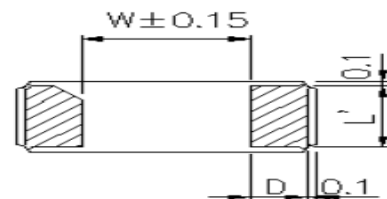
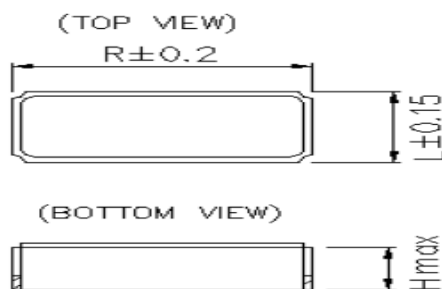




GENERAL SPECIFICATIONS (电气特性)

1. Holder type: (型号)	2012/SMD
2. Normal Frequency: (标称频率)	32.768000KHz
3. Oscillation Mode: (振动模式)	■ Fundamental □ 3rd
4. Load Capacitance(CL): (负载电容)	12.5 PF
5. Frequency Tolerance 25±3°C: (频率偏差 25±3°C)	±20 PPM
6. Stability Over Temperature Range: (工作温度频率偏差)	±30 PPM at -20°C to+70°C
7. Effective Series Resistance: (等效电阻)	≤ 90 KΩ
8. Shunt Capacitance(C0): (静态电容)	≤ 3 PF
9. Typical drive level: (激励功率)	1.0 uW TYP.
10. Operation Temperature Range: (工作温度范围)	-40°C to +85°C
11. Storage Temperature: (存储温度)	-40°C to +85°C
12. Insulation Resistance: (绝缘阻抗)	≥500 MΩ at DC 100V
13. Aging: (老化率)	±3 PPM/Year
14. Leak (检漏)	1×10 ⁻⁷ Torr.1/sec Max
15. Test circuit (测试仪器)	S&A 250B Pi-Network Crystal Measurement System

DIMENSIONS SPECIFICATIONS (外形尺寸)



Internal connection



Model	R	L	H	W	L'	D
4115	4.1	1.5	0.9	2.7	1.3	0.6
3215	3.2	1.5	0.9	1.7	1.3	0.6
2012	2.0	1.2	0.6	0.8	1.0	0.5